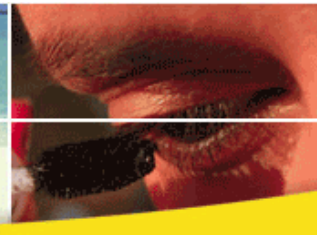




INNOVATIVE SILICONE SPECIALTIES



# SILTECH CORP.

## Material Safety Data Sheet

Silube T308-16  
MSDS NR: 2511

Revised: May 2007

### SECTION 1. CHEMICAL PRODUCT/COMPANY IDENTIFICATION

**Material Identification:** Silube T308-16

**Company Identification:** Siltech Corp.

**Chemical Name:** Alkyl Polyether Polydimethylsiloxane

225 Wicksteed Avenue

**INCI Name:** Cetyl PEG/PPG-10/1 Dimethicone

Toronto, Ont.

M4H 1G5

(416) 424-4567

### SECTION 2. Composition/Information On Hazardous Ingredients

CAS NR

Wt %

Components

None

**THIS MATERIAL IS FOR INDUSTRIAL USE ONLY, NOT FOR FOOD, MEDICAL OR DRUG USE.**

### SECTION 3. HAZARDS IDENTIFICATION

Good manufacturing practices are always recommended when handling any chemical.

There are no significant laboratory data to suggest any hazard to humans.

**Eyes:** Causes irritation, experienced as stinging and discomfort or pain. Redness and swelling may occur.

**Skin:** Brief contact is not irritating. Prolonged contact may cause mild to moderate local redness and irritation.

**Inhalation:** No irritations to respiratory passages are expected from relatively short exposures of less than 8 hours.

**Oral:** Small amounts transferred to the mouth by fingers during use should not injure. Swallowing large amounts may injure slightly.

**Repeated exposure effects:**

**Skin:** No adverse effects anticipated from available information.

**Inhalation:** No adverse effects anticipated from available information.

**Oral:** No adverse effects anticipated from available information.

**Comments:** None.

### SECTION 4. FIRST AID MEASURES

**Eyes:** Immediately flush with water for 15 minutes. Obtain medical attention if irritation persists.

**Skin:** Remove contaminated clothing. Wash skin with soap and water. If irritation persists or if contact has been prolonged, obtain medical attention.

**Inhalation:** No first aid should be required.

**Oral:** Obtain medical attention.

**Notes to Physician:** Slight eye irritant. There is no specific antidote. Treatment of overexposure should be directed at the control of symptoms and the clinical condition of the patient.

**Comments:** Treat symptomatically.

## **SECTION 5. FIRE FIGHTING MEASURES**

**Flash Point (Closed cup):** > 100°C

**Autoignition Temperature:** Not determined.

**Flammability Limits in Air:** Not determined.

**Extinguishing Media:** Apply alcohol-type or all-purpose-type foam by manufacturer's recommended techniques for large fires. Use carbon dioxide or dry chemical media for small fires. Use water spray to cool fire exposed containers.

**Fire Fighting Procedures:** Do not direct a solid stream of water or foam into hot, burning pools; this may cause frothing and increase fire intensity. Use self-contained breathing apparatus and body-covering protective clothing.

**Hazardous Decomposition Products:** Silicon dioxide. Carbon oxides and traces of incompletely burned carbon compounds. Formaldehyde.

## **SECTION 6. ACCIDENTAL RELEASE MEASURES**

**Containment/Clean up:** Sections 13 and 15 of this MSDS provide information regarding certain Federal and local requirements. Collect for disposal. Clean up remaining materials from spill with suitable absorbent. For large spills provide diking or other appropriate containment to keep material from spreading. If diked material can be pumped, store recovered material in appropriate container. Clean area as appropriate since some silicone material, even in small quantities, may present a slip hazard. Final cleaning may require steam, solvents or detergents. Observe all personal protection equipment recommendations described in Sections 5 and 8 of this MSDS. Observe all Federal, Provincial and local regulations that may apply to the clean up of this material.

## **SECTION 7. HANDLING AND STORAGE**

**Handling (Personnel):** Safety Glasses and PVC Gloves.

**Storage:** Keep container tightly closed. Product is "non-hazardous".

## **SECTION 8. EXPOSURE CONTROLS AND PERSONAL PROTECTION**

**Engineering Controls:** Local Exhaust: None should be needed.

General Ventilation: Recommended.

### **Personal Protective Equipment for Routine Handling**

Eyes: Use proper protection - safety glasses as a minimum.

Skin: Washing at mealtime and end of shift is adequate.

Suitable Gloves: No special protection is needed.

Inhalation: No respiratory protection should be needed.

Suitable Respirator: None should be needed.

### **Personal Protective Equipment for Spills**

Eyes: Use proper protection - safety glasses as a minimum.

Skin: Washing at mealtime and end of shift is adequate.

Inhalation/Suitable Respirator: No respiratory protection should be needed.

Precautionary Measures: Avoid eye contact.

### **WARNING**

Causes eye irritation. Avoid contact with eyes.

Wash thoroughly after handling.

**Note:** These precautions are for room temperature handling. Use at elevated temperatures or aerosol spray applications may require added precautions.

### **SECTION 9. PHYSICAL AND CHEMICAL PROPERTIES**

<b><u>Physical form:</u></b>	100% non volatile liquid	<b><u>Viscosity:</u></b> _____	100-2000 cps
<b><u>Color:</u></b>	White	<b><u>Melting Point:</u></b>	Not applicable
<b><u>Odor:</u></b>	Characteristic Odor	<b><u>Boiling point:</u></b>	Not determined
<b><u>Specific Gravity @ 25C:</u></b>	0.94 gm/ml	<b><u>Vapour Pressure @ 25C:</u></b>	Not determined
<b><u>Solubility in Water:</u></b>	Insoluble	<b><u>pH:</u></b>	Not determined

### **SECTION 10. STABILITY AND REACTIVITY**

**Chemical Stability:** Stable

**Hazardous Polymerization:** Will not occur.

**Conditions to Avoid:** None known.

**Materials to Avoid:** Strong oxidizing material can cause a reaction.

### **SECTION 11. TOXICOLOGICAL INFORMATION**

Optional Section - Complete information not yet available.

### **SECTION 12. ECOLOGICAL INFORMATION**

Optional Section - Complete information not yet available.

### **SECTION 13. DISPOSAL CONSIDERATIONS**

Landfill and/or incineration where permitted under Federal, Provincial or local laws. Observe all local, Provincial, and Federal waste management regulations.

### **SECTION 14. TRANSPORTATION INFORMATION**

**Shipping Name:** Not applicable

**Technical Name:** Not applicable

**Primary Class:** Not applicable

**Subsidiary Risk:** Not assessed

**Product Identification Number:** Not applicable

**Packing Group:** Not applicable

### **SECTION 15. REGULATORY INFORMATION**

This product has been classified in accordance with the hazard criteria of the CPR, and this MSDS contains all the information required by the CPR.

**WHMIS Classification:** This product is not subject to WHMIS regulations

This product is listed on the DSL and TSCA inventories.

### **SECTION 16. OTHER INFORMATION**

The data in this MSDS relates only to the specific material designated herein and does not relate to use in combination with any other material or in any process. This data is offered in good faith as typical values and not as product specifications. No warranty, either expressed or implied, is hereby made. The recommended industrial hygiene and safe handling procedures are believed to be generally applicable. However, each user should review these recommendations in the specific context of the intended use and determine whether they are appropriate.

This is the last page.



Siltech Personal Care  
678 442 0210

[www.siltechpersonalcare.com](http://www.siltechpersonalcare.com)